

A Patient's Guide to **Septic Arthritis of the Hip in Children**



©MMG 2005



Alpine Physical Therapy
Three Locations
In North, South, and Downtown Missoula
Missoula, MT 59804
Phone: 406-251-2323 Fax: 406-251-2999

Alpine Alpine Physical Therapy *Physical Therapy*[™]



Thank you for taking the time to explore our web office. Discover all we have to offer. We hope you will find the time spent on our website rewarding and informative.

At Alpine Physical Therapy, we are dedicated to providing ways for those we serve to access the information needed to make informed decisions about healthcare in orthopedics and sports medicine.

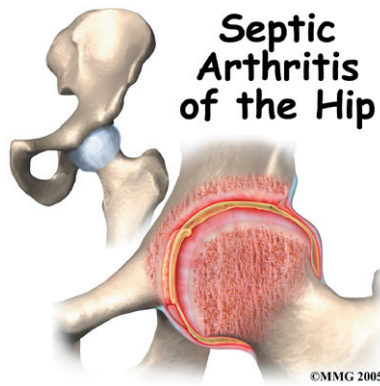
We encourage you to explore this site and learn more about our practice, our facilities, and your treatment options. Make the most of this informative section of our site. You will find educational materials to help you understand orthopedic problems and your best options for treatment.

Alpine Physical Therapy . . .

Change Life Through Movement!



Alpine Physical Therapy
Three Locations
In North, South, and Downtown Missoula
Missoula, MT 59804
Phone: 406-251-2323 Fax: 406-251-2999
Info@AlpinePTmissoula.com
<http://www.AlpinePTmissoula.com>



Introduction

Septic arthritis of the hip in children is a painful joint condition caused by a bacterial infection. Septic arthritis of the hip can occur at any age from newborn to older child. The infection is caused by different bacteria at different ages, but the disease behaves the same. About half of all cases occur in children younger than three years old.

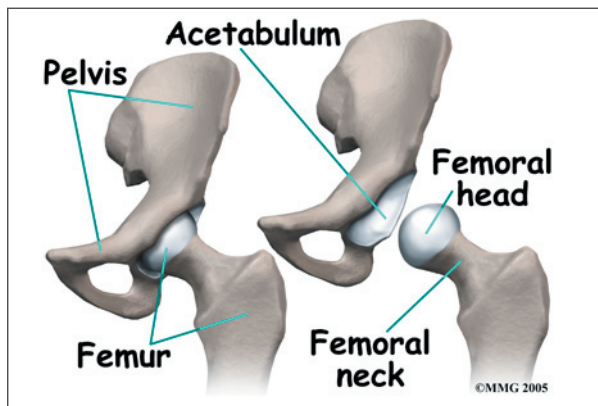
In most cases the condition is *monoarticular*, meaning it only affects one joint. The knee is most often involved, followed by the hip then ankle. If untreated, disastrous results can occur, especially in the hip.

This guide will help you understand

- what part of the hip is involved
- what causes the condition
- what treatment options are available

Anatomy

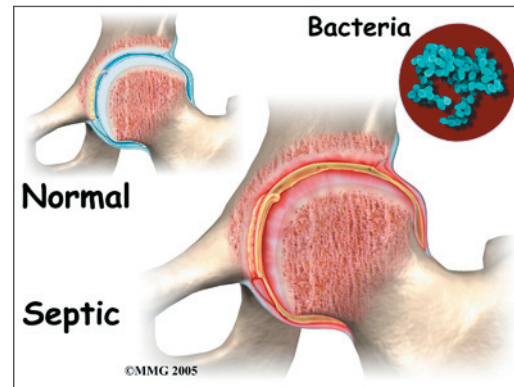
What part of the hip is affected?



The hip joint is where the femur (thighbone) connects to the pelvis. The joint is made up of two parts. The upper end of the femur is shaped like a ball. It is called the femoral head. The femoral head fits into a socket in the pelvis called the acetabulum. This ball and socket joint is what allows us to move our leg in many directions in relation to the body.

Causes

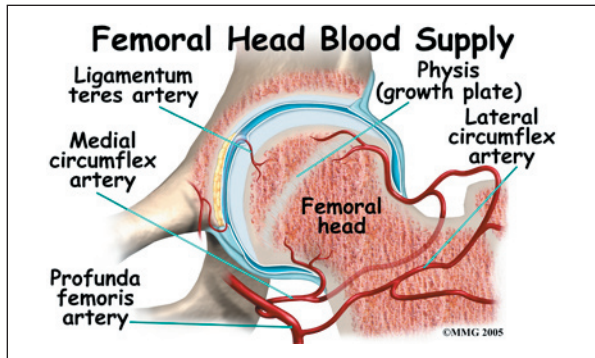
How does this problem develop?



Infections are a part of growing up. Young children commonly get many different types of bacterial infections, such as sore throats, skin infections and wound infections from scrapes and cuts. As we are exposed to these infections, our immune systems develop better protection from these infections. When a bacterial infection occurs anywhere in the body, bacteria from the infected area can enter the bloodstream. These bacteria are then transported all over the body. Usually our immune systems kill these bacteria quickly, before they have an opportunity to begin to reproduce and cause another infected area. Because young children have not completely developed their immune systems, their bodies are not quite as good at rapidly destroying the bacteria.

Sometimes, these bacteria in the bloodstream move into the hip joint. If they are not destroyed quickly, they can set up an infection. Blood containing bacteria moves from the bone across the synovial membrane into the joint. The synovium is a protective layer of

fluid around the joint. Bacteria can also move into the joint cavity indirectly by moving from the growth plate at the end of the femur (thigh-bone) into the joint.



It's not always clear what causes septic arthritis to get started. In some cases an injury seems to lead to a joint becoming infected. In other cases, the child may have other medical problems that create an altered immune system and reduce the ability of the body to fight off an infection. Either one of these problems can increase the risk of infection.

Low-birth weight babies are at risk for infection from the commonly present bacteria *Streptococcus*, also known as strep. Invasive procedures such as fetal monitoring through the scalp or drawing blood from the heel can also introduce the bacteria into the bloodstream. Once bacteria are in the bloodstream they can settle in the hip joint and create an infection.

Infection from *Staphylococcus* (staph infection) can occur just from being in the hospital setting. These bacteria are very common in the hospital, where many patients undergoing treatment have active infections. The chance of exposure is much greater while the child is in the hospital rather than at home. Both strep and staph infections affect children from birth to three months and children older than two or three years old most often.

There are many other different bacteria and underlying infections besides the two named here. In each case the infection behaves a little

differently and is more common in a slightly different age group.

Bacteria that can cause meningitis can also cause septic arthritis of the hip. The bacteria enter through the nose and throat, then quickly enter the bloodstream and travel to distant joints.

Symptoms

What does this problem feel like?

Some children with septic hip arthritis have no apparent symptoms at first. The most common symptoms are sudden fever, hip pain, and a limp. The young child will commonly refuse to put weight on the affected leg. The child who can walk may limp. Infants may be irritable and refuse to eat.

Pain or tenderness is usually in the front of the hip and may travel down to the knee. The skin may be warm and red over the area of tenderness. Both are signs of inflammation from the infection in the joint.

Hip extension or straightening the hip back and rotating it inward increase the painful symptoms. The child prefers to lie on his or her back with the hip *flexed* (bent) and *externally rotated* (rotated outward). This position takes the pressure off the joint.

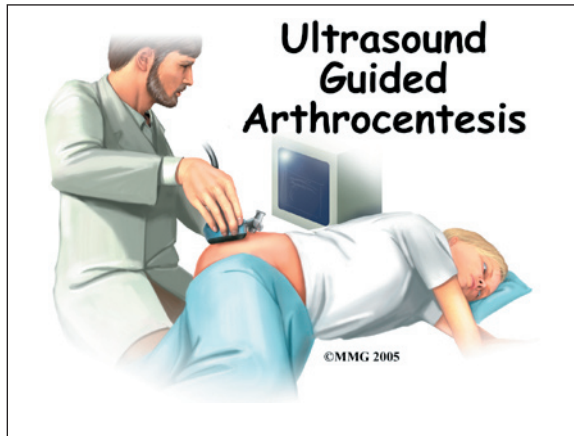
Diagnosis

How do doctors identify the problem?

Early diagnosis is important to prevent a poor result. The history and physical examination are usually enough to make the doctor highly suspicious of septic hip arthritis. Blood tests help confirm the diagnosis. A high *erythrocyte sedimentation rate* (ESR) or "sed rate" and a white blood count greater than 12,000 are red flags to suggest inflammation or infection. Sudden onset of symptoms with fever and positive blood tests all point to septic arthritis.

The doctor will look for signs of swelling, tenderness, and check the child's range of

motion. The spine is also assessed for any problems that could cause hip pain. X-rays are often ordered.



Joint fluid may be removed with a needle using ultrasound to guide the needle into the joint. Lab tests on the fluid will identify the exact cause if the problem is a septic hip.

Treatment

What treatment options are available?

Nonsurgical Treatment

Antibiotic therapy is the first step in treatment. The type of antibiotic given depends on which bacteria are present. Results are best if antibiotics are started within eight hours of joint infection. Medication is given *intravenously* (directly into blood stream) first for about seven days and then *orally* (pills taken by mouth) for another two or three weeks.

Surgery

Surgery may be done to clean out the joint and remove any dead tissue. The joint is thoroughly rinsed with a saline solution. The goal is to remove any products of inflammation and reduce the number of bacteria present. Both actions give the antibiotics a better chance of working quickly. A drain may be placed in the joint for 24 to 48 hours to clear any fluid that has leaked into the nearby tissues.

The surgeon may have to drill into the bone if there is any sign of bone infection. This procedure helps bring increased blood flow to the area to clean away bacteria, infection, and dead tissue.

Rehabilitation

What should I expect from treatment?

Nonsurgical Treatment

The child should respond to the antibiotics with decreased fever and increased energy and appetite. Hip range-of-motion will return to normal and the child will be able to put weight on the hip (leg) again. Children who can walk will gradually resume normal activities. Infants

and babies will also start holding the head up, eating, and moving freely on the floor again.

After Surgery

Bed rest is advised for the first 24 hours to allow time for inflammation of the synovial fluid to resolve. The physical therapist will perform and teach family members how to do *passive range-of-motion* (motion performed by others) for the entire leg. Movement is very important to prevent other joint problems from developing.

More surgery may be needed later if the hip loses too much motion or develops deformity and/or dislocation. Release of tendons and muscles, bone grafts, or reconstruction surgery may be needed.

Long-term follow-up is very important for any child who has had septic arthritis. This is true even for those children who have had early diagnosis, early treatment, and a good result. Changes can occur later in the hip with degeneration of the joint leading to treatment failure.

Notes