

A Patient's Guide to **Arthritis**



©MMG 2005



Advanced Orthopaedic Associates
2778 N. Webb Rd.
Wichita, KS 67226
Phone: (316) 631-1600 Fax: (316) 631-1617



Advanced Orthopaedic Associates



Welcome to the patient information section of our website!

We are providing this educational service because we believe that it is important for patients to understand their orthopaedic condition and treatment plan.

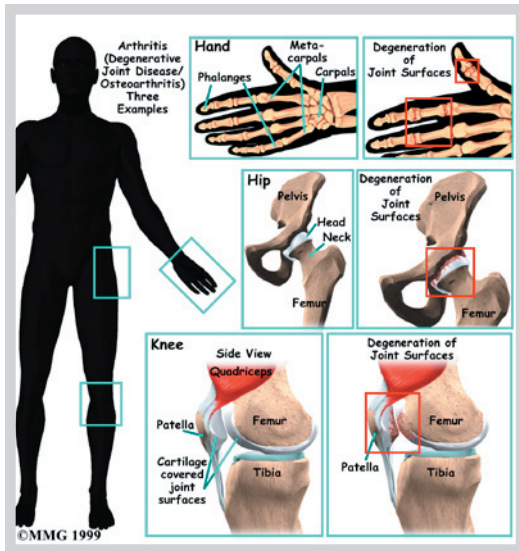
This section provides clear and concise information on a variety of orthopaedic conditions and injuries. You can find information on orthopaedic problems involving virtually every part of the body - From head to toe!

So, if you or someone you know are facing surgery or treatment for an orthopaedic problem, we encourage you to view the topics and illustrations that relate to your specific condition.

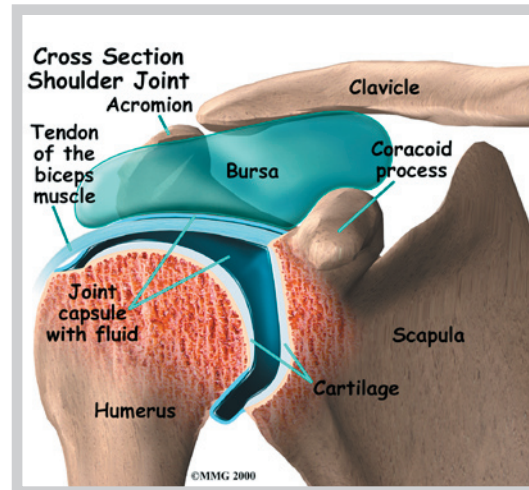
There are also booklets available for most of the topics that you may download and print, if you desire. Some of them may take a while to download due to their size, but they are worth the wait!



Advanced Orthopaedic Associates
2778 N. Webb Rd.
Wichita, KS 67226
Phone: (316) 631-1600 Fax: (316) 631-1617
www.aoortho.com



bones come together and must rub against one another to allow motion. Smooth, slick *articular cartilage* covers the end of the bones



What Is Arthritis?

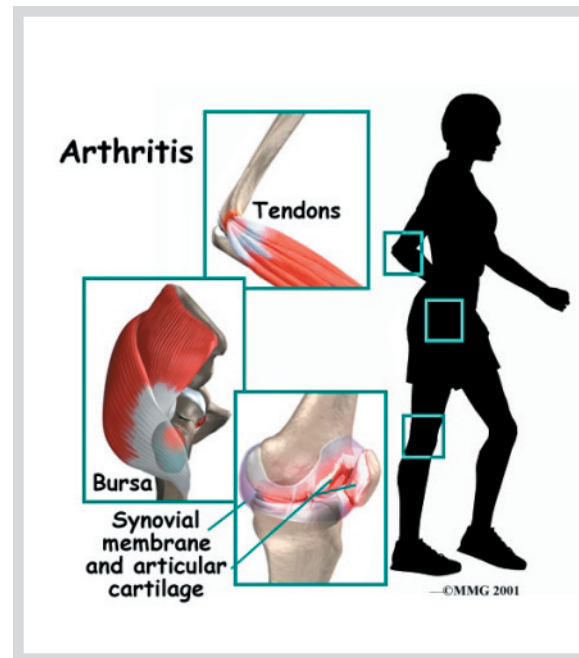
Arthritis means *inflammation of the joints*. Inflammation generally includes symptoms of redness, heat, swelling, and pain. Many different diseases can result in inflammation of the joints. Arthritis is therefore a general term that describes more than one hundred different diseases of the joints of your body.

In some types of arthritis, the cause of the disease is known, but in others it is still unknown. Some types of arthritis come on suddenly, and others develop slowly. Any joint can be affected, including your knees, hips, neck, shoulders, and fingers.

The diseases that cause arthritis can also attack muscle and connective tissue around joints. Some diseases may even damage other organs of the body, such as the kidneys, intestines, and heart. Because the diseases inflame the joints, most arthritic conditions and related diseases involve *chronic* (long-term) pain. Over time, they may cause increasing damage to the joints or soft tissues of your body.

Your joints are beautifully designed to minimize stress and damage while you move. Nearly all joints of the body are *synovial* joints. Most synovial joints occur where two

so they don't rub together. *Synovial fluid* lubricates the joint. Around the joint, connective tissue forms a watertight sack that is called the *joint capsule*. Small, fluid-filled sacks, called *bursae*, cushion parts of the joint. *Ligaments* connect the bones together and *tendons* connect the muscles to bones. A problem with any one of these parts can lead to joint pain and inflammation—arthritis.



Many people of all ages suffer from arthritis. It is estimated that forty million Americans--

that's one in seven of us--have arthritis. Almost two-thirds of arthritis patients are women, but for some types of arthritis most sufferers are men.

Arthritis and related diseases are often painful to live with and difficult to treat. But your doctor can help you find treatment and pain management strategies that work for you. The method of treatment will vary depending on the specific disease.

Notes